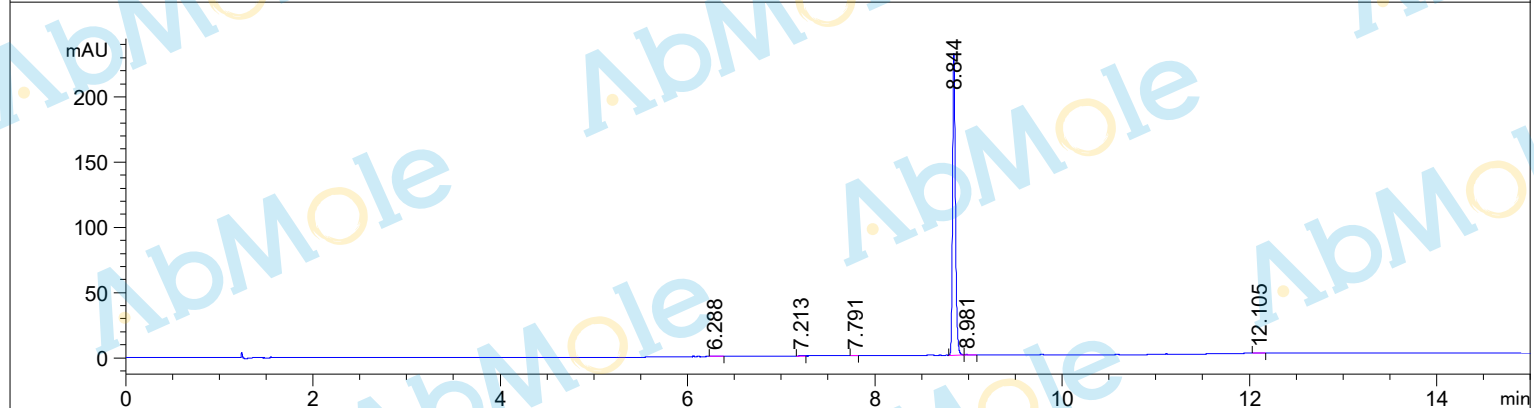
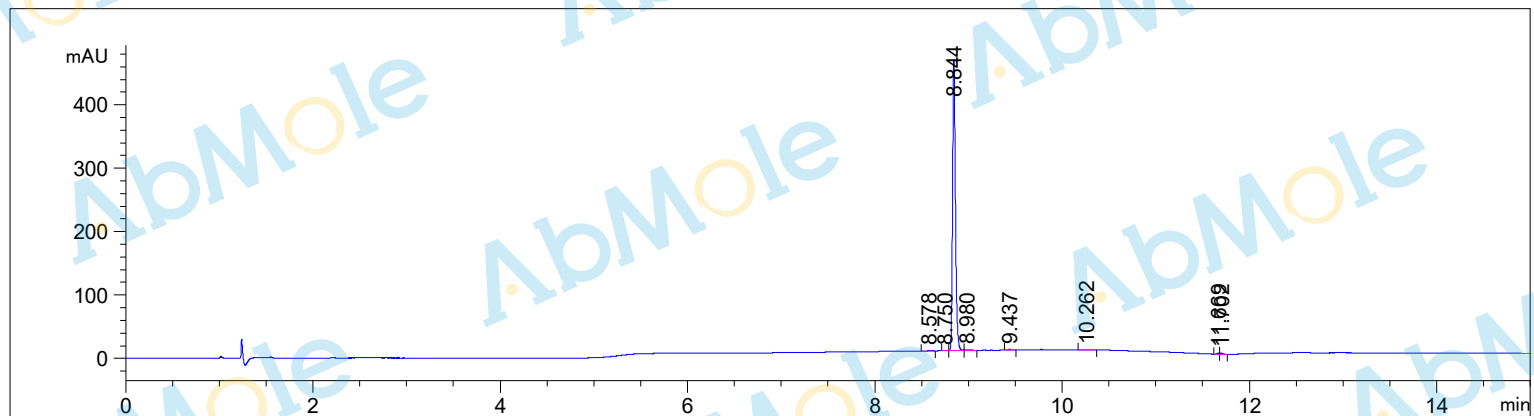


```

=====
Acq. Operator   : System                      Seq. Line : 40
Acq. Instrument : HPLC 1260                   Location  : Vial 39
Injection Date  : 2021-6-7 7:55:29           Inj       : 1
                                                Inj Volume: 1.500 µl
Acq. Method     : D:\HPLC\DATA\2021\ 2021-06-06 19-20-34\
Last changed    : 2021-6-6 18:47:56
Analysis Method : D:\HPLC\METHOD\2021.06.03\
Last changed    : 2021-6-10 18:54:09
                  (modified after loading )
Method Information : XDB-C18 4.6mm*150mm 5µm
=====
  
```



=====  
 Area Percent Report  
 =====

```

Sorted By           : Signal
Multiplier          : 1.0000
Dilution            : 1.0000
Use Multiplier & Dilution Factor with ISTDs
  
```

Signal 1: DAD1 B, Sig=214,4 Ref=off

Peak #	RetTime [min]	Type	Width [min]	Area [mAU*s]	Height [mAU]	Area %
1	8.578	BB	0.0498	1.53850	3.95970e-1	0.1542
2	8.750	BV	0.0314	1.17061	5.38413e-1	0.1173
3	8.844	VV	0.0330	980.36621	458.09109	98.2575
4	8.980	VB	0.0549	3.60962	8.97135e-1	0.3618
5	9.437	BB	0.0389	2.61744	1.03892	0.2623

Sample Name :Atazanavir Sulfate-01

Peak #	RetTime [min]	Type	Width [min]	Area [mAU*s]	Height [mAU]	Area %
6	10.262	BB	0.0666	2.26157	4.08590e-1	0.2267
7	11.669	BV	0.0276	2.37862	1.28420	0.2384
8	11.702	VB	0.0337	3.80937	1.66636	0.3818

Totals : 997.75195 464.32069

Signal 2: DAD1 C, Sig=254,4 Ref=off

Peak #	RetTime [min]	Type	Width [min]	Area [mAU*s]	Height [mAU]	Area %
1	6.288	BB	0.0511	1.55827	4.31843e-1	0.3139
2	7.213	BB	0.0301	7.95438e-1	4.01033e-1	0.1602
3	7.791	BB	0.0271	2.87239e-1	1.58524e-1	0.0579
4	8.844	BV	0.0328	491.35406	231.13959	98.9806
5	8.981	VB	0.0426	1.52811	5.00667e-1	0.3078
6	12.105	BB	0.0524	8.91165e-1	2.12489e-1	0.1795

Totals : 496.41429 232.84414

\*\*\* End of Report \*\*\*